



PERIOD  
HOMES

80 High Street, Ingatestone, CM4 9DW

t. 01277 288000

e. [essex@periodhomes.co.uk](mailto:essex@periodhomes.co.uk)



Mary Munnion Quarter  
Chelmsford CM2 9FT  
Guide Price £300,000-£325,000



# Mary Munnion Quarter, Chelmsford, CM2 9FT

GUIDE PRICE £300,000 - £325,000

OFFERED WITH NO ONWARD CHAIN.

Situated within the beautiful St. Johns development within close proximity of Old Moulsham & central Chelmsford is this elegantly presented conversion of a former hospital building. This well presented and spacious two bedroom first floor apartment is within a small and exclusive block of just three homes. The property offers stylish and modern open plan living accommodation, comprising a fitted kitchen area, generous living space, two double bedrooms, a bathroom with a contemporary white suite, and a separate cloakroom.

Externally, the apartment benefits from two allocated parking spaces and access to a communal bike shed. The St John's development also enjoys beautifully landscaped green spaces, providing pleasant outdoor areas for residents to enjoy.

Mary Munnion Quarter is located just 1.2 miles from Chelmsford city centre and offering excellent access to the A12. The area benefits from a Tesco superstore, local shops, and highly regarded schools including Moulsham Infants & Juniors, Mildmay Primary, and top grammar schools. Regular bus services run along Wood Street into the city centre, which offers a wide range of shops, restaurants, and leisure facilities. Nearby parks and golf clubs provide ample outdoor space, and Chelmsford station offers fast rail links to London Liverpool Street in as little as 32 minutes.



## ENTRANCE HALL

## CLOAKROOM

## BEDROOM

11'10 x 13'1 (3.61m x 3.99m)

## BEDROOM

12'4 x 19'2 (3.76m x 5.84m)

## BATHROOM

6'11 x 5'9 (2.11m x 1.75m)

## KITCHEN/DINING/LIVING ROOM

19'8 x 17'1 (5.99m x 5.21m)

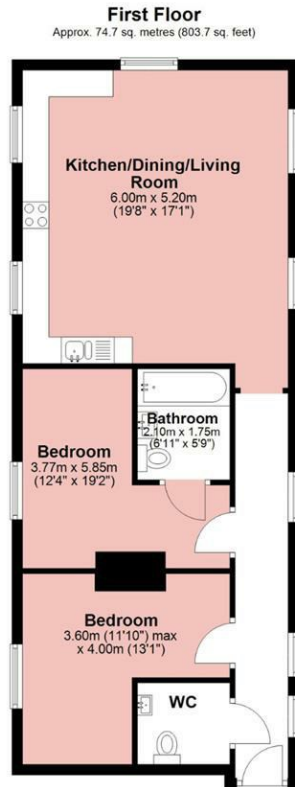


# Mary Munnion Quarter

Approx. Gross Internal Area 74.7 Sq M (803.7 Sq Ft)

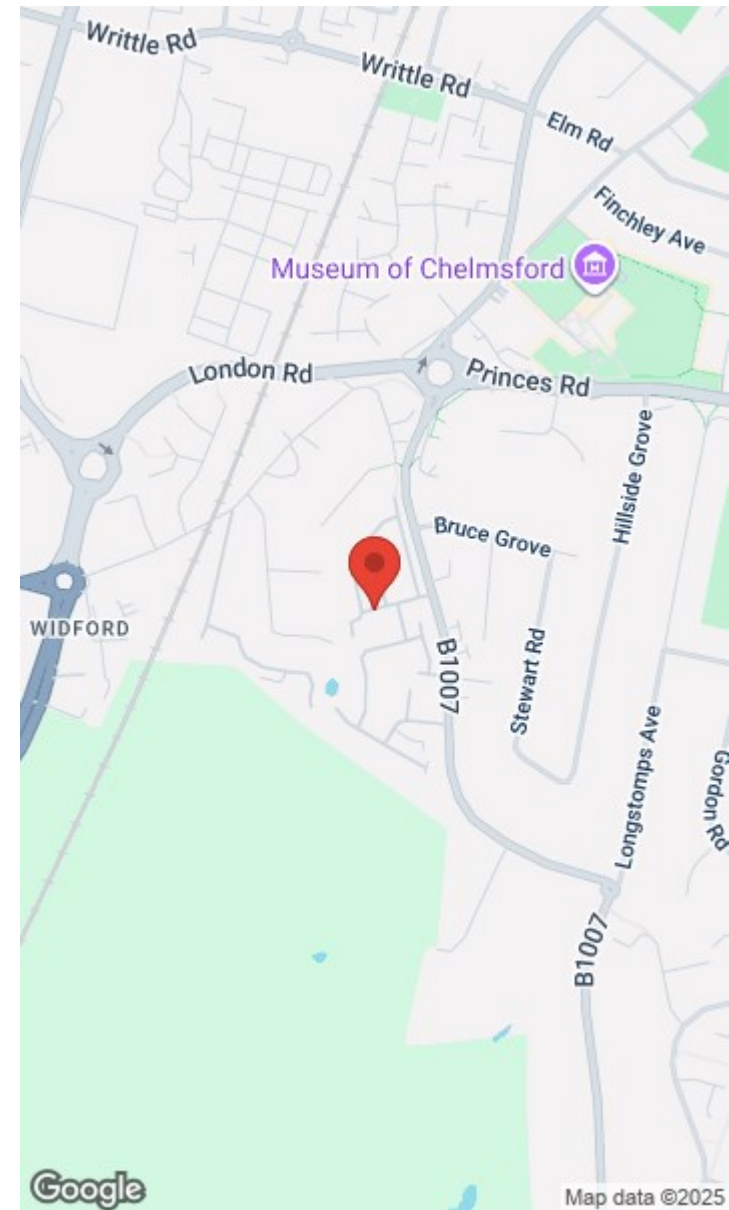


PERIOD  
HOMES



Measurements are approximate and for illustration purposes only. While we do not doubt the accuracy and completeness, we advise you conduct a careful independent assessment of the property to determine monetary value.

© @modephoto.uk www.modephoto.co.uk



**PLEASE CALL 01277 288000 TO ARRANGE A VIEWING**

**[www.periodhomes.co.uk](http://www.periodhomes.co.uk)**

**INDEPENDENT ESTATE AGENTS - VALUATIONS WITH NO OBLIGATION - PROFESSIONAL SERVICE**

These particulars do not constitute any part of an offer or contract. All measurements are given as a guide, no liability can be accepted for any errors arising therefrom. No responsibility is taken for any other error, omission, or mis-statement in these particulars.

Period Homes, a trading style of Walkers Village and Country Homes Limited do not make or give, whether in these particulars, during negotiations or otherwise, any representation whatsoever in relation to this property.



Period Homes



@period\_homes



